

Customer :

customer

Customer part :

customer part

Comment :

Comment

S1=0.2

S2=0.89

Tmax=441

Tp S2=480.0

PI=0.18

HI=107

Sample =10641.9

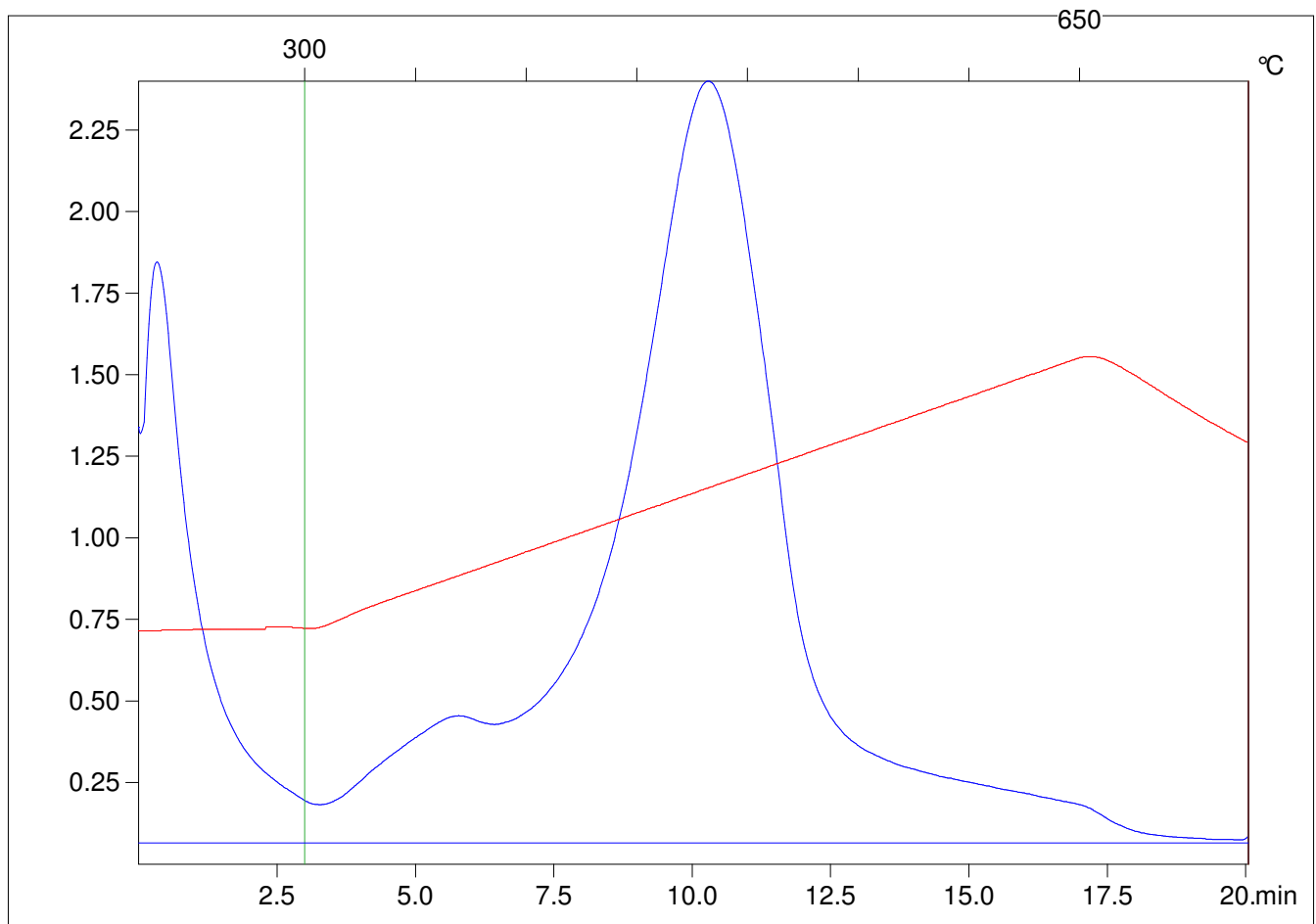
Method =Bulk Rock

Cycle=Basic

KFID(10*9)=1167

Qty =70.8

TOC=0.83



C:\VINC\PK141015\PK089.R00 : FID pyrolysis graphic

State

Pyro Status

Oxi Status